



The Japanese-inspired, central courtyard offers a tranquil outdoor space which may be appreciated from each room of the house. Subtle lighting lends a mystical quality to the garden – a contrast to the somewhat barren landscape of the home's country Victoria setting.



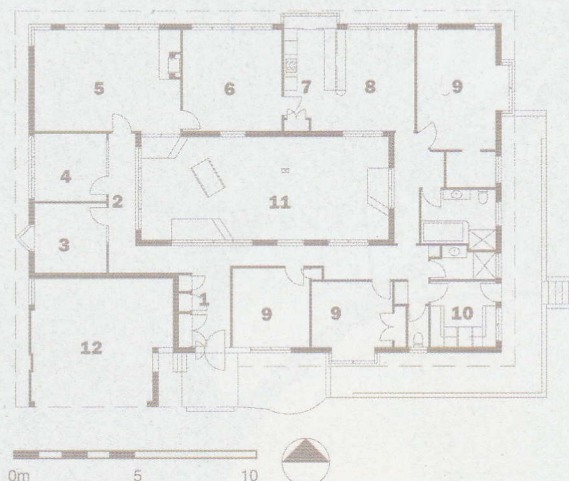


## VARIATION ON A BUSH THEME

APPROACHING THIS HOUSE IN CASTLEMAINE, EXPECTATIONS OF A TYPICAL, ALBEIT MODERN, AUSTRALIAN COUNTRY HOUSE SPRING TO MIND. WHAT UNFOLDS BEYOND THE FACADE, HOWEVER, IS A MYRIAD OF COLOURFUL CULTURAL REFERENCES AND PERSONAL CURIOSITIES INTERWOVEN WITH TRADITIONAL AUSTRALIAN ELEMENTS.



- 1 Entry
- 2 Passage
- 3 Study
- 4 Library
- 5 Living
- 6 Dining
- 7 Kitchen
- 8 Family
- 9 Bedroom
- 10 Laundry
- 11 Courtyard
- 12 Carport



**THE HEART OF THIS TREVOR SCOTT HOUSE** is an enclosed Japanese courtyard garden designed to be viewed from each room. A functional and aesthetic focal point, the courtyard provides a protected area on a site exposed to high winds. The low ridge roof allows sunlight to strike the north wall so the space becomes a warm shelter and place of rest. To raise thermal mass levels inside the house, reverse brick veneer was chosen for the courtyard walls and, as timber is the traditional backdrop for a Japanese courtyard garden, the walls were clad in cypress pine weatherboards. Featuring a pool, a bridge, fragrant plants and the sound of falling water, this central garden transforms the mood for the rest of the house as it changes with the time of day and the seasons.

The entry to the house sets the tone for the interior with a composition of elements that allude to features within. The architect designed, stained glass door and sidelight refer to both inside and out – the wattle motif and other elements, a hint of the garden within and a reflection of the nature of the site. Subsequently, in the hall, visitors are greeted by the garden in all its magnificence.

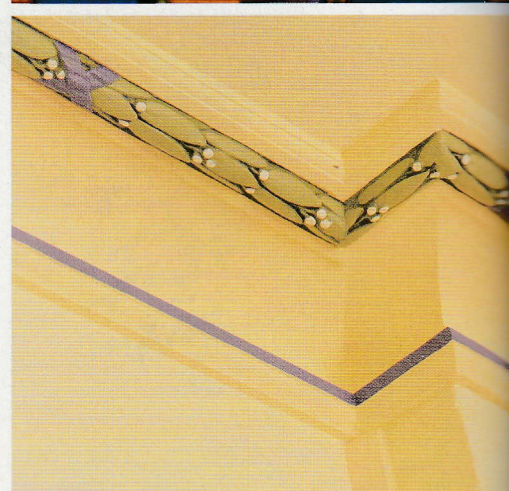
From the dining room opposite, views across the courtyard to the entry are spectacular at dusk. The bold colours of the stained glass, lit at night, provide an iridescent backdrop for the formal, enclosed dining area. A large plate collection filling most of the west wall evokes a blue theme in this space.

The neighbouring lounge is spacious and less formal. The room is centred on a glassed-in fireplace, and gum nuts and leaves adorn decorative plaster cornices. The kitchen/family room is more lofty and has a country feel which is created by the lime-washed pine ceiling.

The master bedroom is naturally lit by two single windows facing north and a bay window to the east. A glimpse of the courtyard from the bed is a luxury afforded by a glass door to the garden. The ensuite has another thematic influence quite removed from the Australian bush. A coffered ceiling, a curved niche in the wall, marble bath and basin surround, a marble column, and a frieze over the shower, are an echo of Roman times and a salute to an age of glory. The glass shower screen has even been etched with a motif of the Colosseum and a map of the Roman Empire.

The house itself is only one part of a long, comprehensive project which, over the past seven years, has included the construction of a shed/garage for storage, and a studio for guests or work. The entire concept incorporates a roadway, a gatehouse, partial landscape design and the studio, garage and home.

The sloping site, with views of Mount Alexander and the State Forest, has level areas or saddles on which the buildings are located. Use of these level areas minimised the excavation required in preparing the site. The final development, including outbuildings and landscaping, is expected to be completed by 1999.







Thematic variations and decorative subtleties distinguish each space: a treasured plate collection fills a wall, stencilled cornices and stained glass doors add colour, a curved niche implies a Roman theme. The backdrop of the courtyard garden provides an element of consistency.



**ARCHITECTS**  
**Trevor Scott Architects**  
**9 Hunter Street**  
**Castlemaine**  
**Victoria 3450**  
**Tel: (03) 5472 3377**  
**Fax: (03) 5472 3311**

**PRACTICE PROFILE**  
 •Solar and energy efficient design

**DESIGN TEAM**  
 •Trevor Scott, Sarah Gunn

**CLIENTS**  
 •Elisabeth & Neville Burgess

**CONSULTANTS**  
 •Builder S J & J R Bevans  
 •Engineer Brian F Bartlett  
 •Landscape Design Trevor Scott Architects •Planting Design Paul Grimes & Debbie Crosbie Horticulturalists  
 •Courtyard Pool L R & W R Gedy Pty Ltd  
 •Courtyard Lighting Gardens at Night Pty Ltd •Painter Peter Sheehan •Stained Glass Pemro Leadlighting •Etched glass Glass Imagery Pty Ltd

**PRODUCTS**  
 •Roofing Lysaght Corrugated steel; Colorbond finish  
 •External walls Nubrick polychrome •Internal walls Plasterboard & brick •Ceilings Plasterboard & pine lining with lime wash finish •Windows & Doors K D H W; front door by architect; door handles & brass bells by ACE Hardware, Ghaziabad, India •Flooring Bunning Building Supplies; jarrah T & G strip flooring, secret nailed •Internal lighting Gardens at Night Pty Ltd; spots, mirror lights & effects in bathroom by architect & clients  
 •Kitchen Oliveri sink; Kleenmaid oven, cooktop, rangehood & dishwasher; Fisher & Paykel refrigerator  
 •Bathroom Monet acrylic bath; Caroma Cameo basin; Stegbar shower screen; niche & frieze over screen architect designed; marbling by Peter Sheehan; Domaine tapware & accessories; Ideal Standard Madison toilet suites •Laundry Oliveri trough; Hafele built-in ironing board; Kleenmaid washing machine; Fisher & Paykel clothes dryer  
 •Heating/Cooling Heat Charm solid fuel heater; IXL Gaspot gas heater; Architect designed housing for evaporative coolers on roof; Solahart hot water service on roof •External elements Selkirk Sovereign Buff paving on pergola & terraces •Other Audio equipment housing designed by architect